



## CD-A - Advanced Capacitive Discharge Welder

The CD-A Advanced Capacitive Discharge Welder features dual pulse output control, internal pulse monitoring, optional polarity switching and is automation capable.

The unit offers consistent welding output for repeatable process results, with ultrafast rise time for conductive material welding. Featuring fully controllable dual pulse output, the CD-A provides pulse shaping with 4 discrete pulse lengths, programmable squeeze and hold times and adjustable pulse separation. Furthermore, the units offer the ability to set limits around a schedule to prevent bad welds and a built-in peak current indicator which indicates the last weld peak current. The ability to change polarity – individual settings for positive, negative, or alternating polarity – allows for a way to balance weld nuggets and overcome the Peltier effect, as well as extend electrode life.

The CD-A welder is automation ready and can be easily integrated into production lines. The unit can be programmed to communicate with a host computer or with an automation control system. Operators can set and store up to 63 schedules to quickly change between weld parameters. A schedule chaining feature lets users automatically switch between two different schedules. The power supplies enable rapid fire between pulses for quick welding of adjacent locations.

The CD-A Advanced Capacitive Discharge Welder is ideal for battery tab welding, interconnects, honeycomb tacking and fine wire to pad applications.

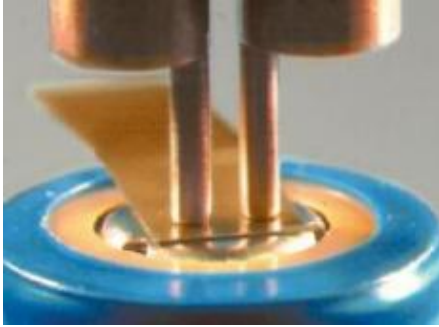
### Key Features CD-A - Advanced Capacitive Discharge Welder

- > Dual pulse function helps overcome surface inconsistencies
- > Built-in monitor measures peak current for both pulses for process monitoring
- > Process monitor features a color coded bar graph on the RUN screen that provides instant weld history of In Limit/ Out of Limit percentages to assess process performance
- > Upper and lower limits can be set for both pulses, with an option to inhibit Pulse 2 if Pulse 1 is out of limits. Prevents weld blow out
- > Upslope function allows gradual ramping of weld energy to alleviate weld splash
- > Automatic polarity switching between pulses provides even heating between electrodes and increases electrode life
- > Up to four software selectable pulse widths increases the range of welding applications and improves process optimization
- > Efficient power electronics provide high repetition rates

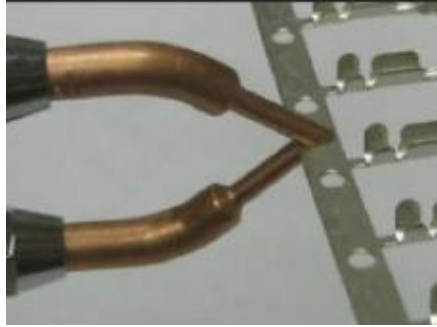
## Specifications CD-A - Advanced Capacitive Discharge Welder

Feature	CD-A125A / CD-A300A / CD-A1000A
Voltaje de línea de entrada	90 - 138 VAC, 50 - 60 Hz ; 180 - 264 VAC, 50 - 60 Hz
Pulso dual	Yes
Salida del controlador del cabezal neumático	24 V, DC or AC – 0.5 A Max.
Programas de soldadura	63
Programas en cadena (Paso automático)	Yes
Tiempo de compresión programable	Programmable per schedule from 0 - 2.999 sec
Programmable hold time	Programmable per schedule from 0 - 2.999 sec
Selección de programa remota	Yes
Polaridad programable	Positive/Negative/Alternating
Zumbador de ciclo final	Yes
Relés de salida	Weld Ready, Weld End, Counter Limit, Alarm, Out of Limits
Control por microprocesador	Yes
Contador de soldadura con límite programable por el usuario	Yes
Idiomas	English, Spanish, German
<b>WEIGHT &amp; DIMENSIONS</b>	
Dimensions (LxWxH) CD-A125A	388 mm x 261 mm x 375 mm (15.25 in x 10.26 in x 14.76 in)
Weight CD-A125A	20 kg (44 lbs)
Dimensions (LxWxH) CD-A300A	388 mm x 261 mm x 375 mm (15.25 in x 10.26 in x 14.76 in)
Weight CD-A300A	31 kg (69 lbs)
Dimensions (LxWxH) CD-A1000A	388 mm x 261 mm x 375 mm (15.25 in x 10.26 in x 14.76 in)
Weight CD-A1000A	31 kg (69 lbs)

Product applications CD-A - Advanced Capacitive Discharge Welder



Battery tab welding



Tack welding of carrier strip



Conductive terminal attachment

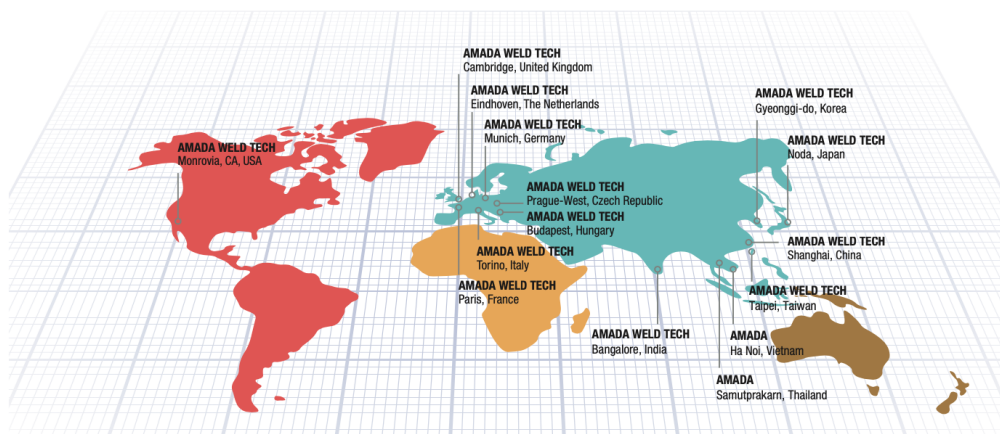
# AMADA<sup>®</sup>

## AMADA WELD TECH

### OUR TECHNOLOGIES



### OUR SALES OFFICES



**AMADA WELD TECH GmbH**  
Lindberghstrasse 1 • DE-82178 Puchheim, Germany  
T: +49 (0) 89 83 94 030 • Fax : +49 (0) 89 839403 68  
info@amada-weldtech.eu • www.amada-weldtech.eu  
ISO 9001 Certified Company

Please contact our worldwide  
network here:



follow us on:



All data, images and text are subject to change at any time. AMADA WELD TECH GmbH reserves the right to change, modify, delete and add technical specifications and product details at any time without prior notification. © 2020 AMADA WELD TECH GmbH.

**WWW.AMADAWELDTECH.EU**