



UF-2000A / UF-4000A / UF-R4000A Power Supply (formerly known as UNIFLOW4, UNIFLOW 4R)

UF-2000A / UF-4000A / UF-R4000A is a new power supply for Hot Bar Reflow Soldering, Heat-Sealing, ACF Laminating and Heat Staking technologies. It utilises pulsed heat technology to provide targeted heating and precision temperature control for a variety of components including flex circuits, ribbon cables, wires, SMT components, single or dual-sided edge connectors and thermo-compression bonding of gold ribbon.

Key Features UF-2000A / UF-4000A / UF-R4000A Power Supply

- > Closed-loop temperature and time control
- > Stores 63 heating profiles
- > Remote programming via RS-232/485
- > Two thermocouples for process control and auxiliary monitoring
- > Comprehensive and informative user interface: (Graphic and numeric process data, Status and alarm messages, Heat profile setting and envelope limits, Temperature error indicators, User scalable time axis, Real time temperature plot)
- > Choice of a standard unit with built-in transformer or remote unit with small control unit and remote transformer. There are four versions of the remote transformers with a choice of two energy levels and two thermode voltage ranges for additional application flexibility

Specifications UF-2000A / UF-4000A / UF-R4000A Power Supply (formerly known as UNIFLOW4, UNIFLOW 4R)

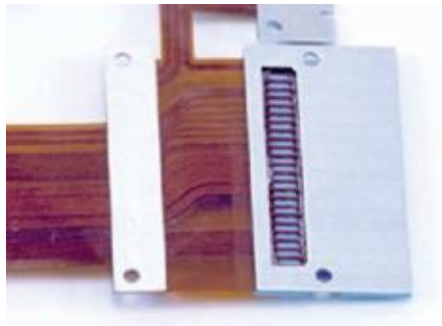
Temperature profile specifications			
Temperature range Idle	25 to 300 °C	Heat	60 to 600 °C
Temperature range Baseheat	25 to 300 °C	Heat Extended Range	60 to 999 °C
Temperature range Preheat	60 to 500 °C	Postheat	25 to 999 °C
Time period (in 0.1 Sec increments) base heat	0 to 99.9 seconds	Rise to Heat Time	0 to 9.9 seconds
Time period (in 0.1 Sec increments) rise to preheat time	0 to 9.9 seconds	Heat	0.1 to 99.9 seconds
Time period (in 0.1 Sec increments) preheat	0 to 99.9 seconds or continuous	Postheat	0 to 99.9 seconds
Temperature control - accuracy	± 2% of reading or ± 6 °C whichever is greater		
Temperature control - repeatability	± 1% of reading		
Thermocouple input	Type E, J, or K		
Heating rate control	Three integrated user-set parameters optimize temperature profile		
Interrupt function (optional)	Stop heating cycle at reach of force or displacement limit through external device		
Programmable heat profiles	Sixty three (63) non-volatile memory		
Switched input electrical specifications			
Operator initiation	1 or 2 level footswitch		
Dedicated relays	24 VAC/ 24 VAC 0.3A		
Air head	ON/OFF for head actuation		
Head cool	ON/OFF for cooling thermode holder		
Solder cool	ON@COOL, OFF@PREHEAT		
Programmable relays	7 each, electromechanical (24 VAC or +24 DC)		
Contact rating	24 VAC/24DC, 0.3A		
Communication ports	RS-232, RS-485		
Programmable relay functions	Reflow, preheat, baseheat, idle on, alarm, out of limits, clean thermode, replace thermode, end reflow, heat on, head valve active, system ready		
PHYSICAL/ENVIRONMENTAL SPECIFICATIONS			
Operating temperatures	59°F (15° C) – 104°F (40 °C)		
Relative humidity maximum	93% @ 104°F 40 °C		
POWER SUPPLY ORDERING GUIDE			
UNFE2/120 UF-4000A	UF-4000A Power Supply, 120 VAC, 2kVA transformer / 15A, Single Phase 50 or 60 Hz		
UNFE4/240/EAPRO UF-4000A	UF-4000A Power Supply, 240 VAC, 4kVA transformer / 15A, Single Phase 50 or 60 Hz		
UNFE4/240/EAPRO UF-R4000A	UF-R4000A Power Supply, 240 VAC, no transformer / 15A, Single Phase 50 or 60 Hz		

28-03-2024 16:56

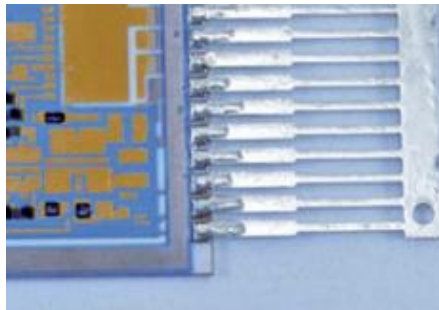
Page 2

AMADA WELD TECH

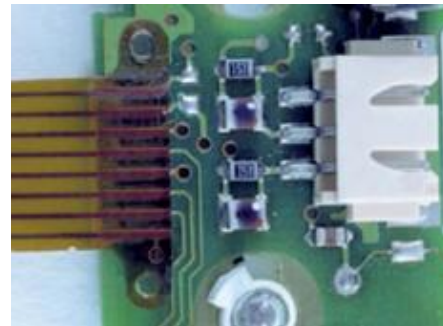
Product applications UF-2000A / UF-4000A / UF-R4000A Power Supply (formerly known as UNIFLOW4, UNIFLOW 4R)



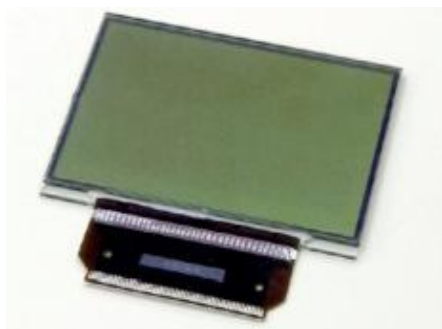
Medical



Automotive



Consumer Electronics



Aerospace

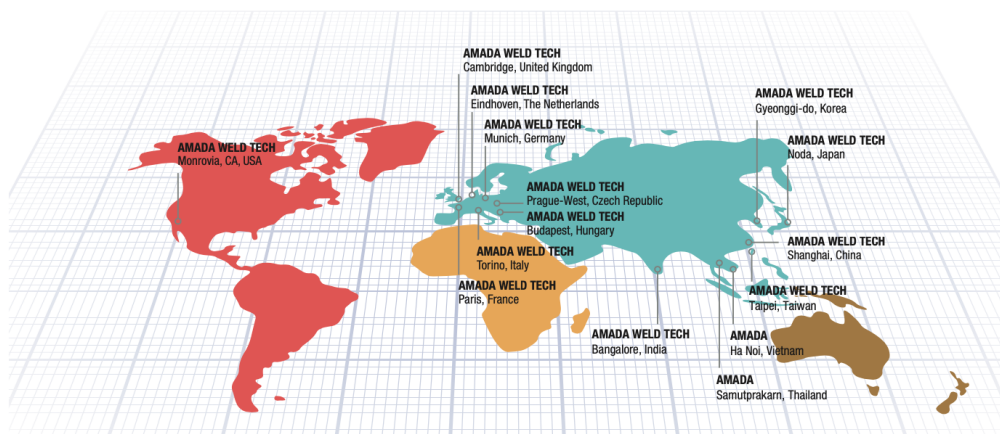
AMADA®

AMADA WELD TECH

OUR TECHNOLOGIES



OUR SALES OFFICES



AMADA WELD TECH GmbH
Lindberghstrasse 1 • DE-82178 Puchheim, Germany
T: +49 (0) 89 83 94 030 • Fax : +49 (0) 89 839403 68
info@amadaweldtech.eu • www.amadaweldtech.eu
ISO 9001 Certified Company

Please contact our worldwide
network here:



follow us on:



All data, images and text are subject to change at any time. AMADA WELD TECH GmbH reserves the right to change, modify, delete and add technical specifications and product details at any time without prior notification. © 2020 AMADA WELD TECH GmbH.

WWW.AMADAWELDTECH.EU