



NH-2000A Series Pulsed Heat Reflow Soldering System (formerly known as MHBR)

Pulsed Heat Reflow Soldering is a selective soldering process where two pre-fluxed, solder-coated parts are heated with a thermode to a sufficient temperature to melt the solder. After this the parts are cooled below the solidification temperature to form a permanent electro-mechanical bond. The newhorizon Hot Bar systems are an integral part of the HotBar series using Pulsed Heat technology through the UF4000A power supply, a pneumatic bond head and customized 2-D & 3-D thermodes.

The NH-2000A product range includes various models with different product handling features such as linear slides and rotary tables. The systems are designed considering ergonomic standards offering maximized production output. All process parameters are embedded into the system, ensuring consistent process quality and operator independence.

The NH-2000A systems enable full automatic process control with manual (un-)loading of parts. Each system can be adapted to suit the customer's technical requirements through extension with optional plug & play modules. All modules are mounted on a robust frame construction. The system offers the best stability supporting applications down to the finest pitch.

Key Features NH-2000A Series Pulsed Heat Reflow Soldering System

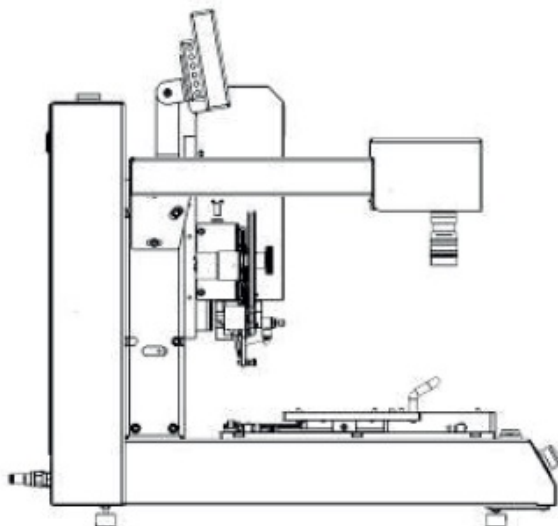
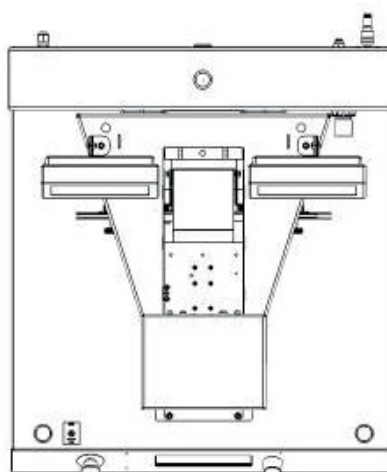
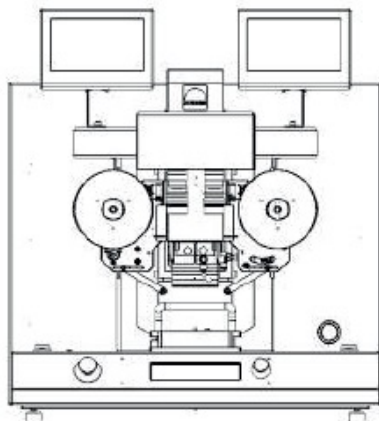
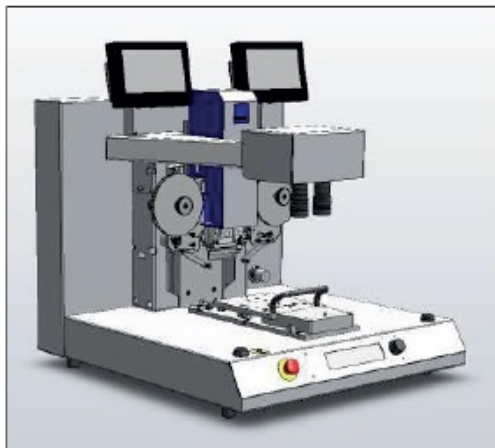
- > Compact and flexible systems for high quality connections
- > Connecting displays to PCB, bonding glass panel displays and flex foils
- > User friendly system configuration, including optional plug & play modules
- > Pulsed Heat process control proven technology through UF4000A Power Supply
- > Ideal price-performance (throughput) ratio
- > CE approved
- > Pneumatic bond head, X-Y Hot Bar planarity adjustment and electronic system control included

Specifications NH-2000A Series Pulsed Heat Reflow Soldering System (formerly known as MHBR)

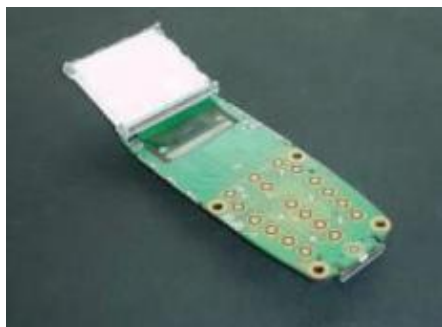
Model			
Power requirements	100-240 VAC / Single Phase / 50/60 Hz (16 Amps max)		
Air supply	6 – 8 bar [87 – 116 psi] , clean dry & filtered air		
Fixture assembly baseplate dimensions	150 x 150 mm		
Fixture weight	1,0 kg Max (per product fixture)		
Thermode size (length x width) [2-D / 3-D configuration]	[2-D: up to 50,0 x 3,0 mm] [3-D: up to 75,0 x 4,0 mm]		
Starting operation	Two hand control		
Operating temperature	15 – 40 °C		
Operating humidity	Max 93% @ 40 °C		
Certification	CE Approved		
Bonding head & Uniflow-4 Technical specifications			
Force range	8 – 80 N @ 6 Bar / 60 – 750 N @ 6 Bar (applicable for both MHBR and MHSB models)		
Bond head stroke (max)	45 mm		
Bond level height	40 mm		
Free Z space for components	20 mm		
Temperature range Idle	25 to 300 °C	Heat	60 to 600 °C
Temperature range Baseheat	25 to 300 °C	Heat Extended Range	60 to 999 °C
Temperature range Preheat	60 to 500 °C	Postheat	25 to 999 °C
Time period (in 0,1 sec increments) Base Heat	0 to 99,9 seconds	Rise to Heat Time	0 to 9,9 seconds
Time period (in 0,1 sec increments) Rise to preheat time	0 to 9,9 seconds	Heat	0,1 to 99,9 seconds
Time period (in 0,1 sec increments) Preheat	0 to 99,9 seconds or continuous	Postheat	0 to 99,9 seconds
Communications ports	RS-232, RS-485		
MODEL SPECIFICATIONS			
NH-2100 Base	No movement		
NH-2200 Linear Slide (manual 2-position front-rear slide)	Stroke between front and bonding position: 200 mm fixe		
NH-2300 Rotary table (manual 2-position)	Turntable diameter: 380 mm		
NH-2400 Automatic Rotary table (pneumatic 2-position)	Turntable diameter: 380 mm Turntable movement time:		
NH-3110 base	No movement		
NH-3210 linear slide (manual 2-position front-rear slide)	Stroke between front and bonding position: 200 mm fixed		

NH-3310 rotary table (manual 2-position)	Turntable diameter: 380 mm
NH-3410 Automatic Rotary table (pneumatic 2-position)	Turntable diameter: 380 mm Turntable movement time:
WEIGHT & DIMENSIONS	
Dimensions HxWxD (mm)	650 x 615 x 695 (excluding Power Supply)
Weight	60 kg (excluding Power Supply of approx. 30 kg)

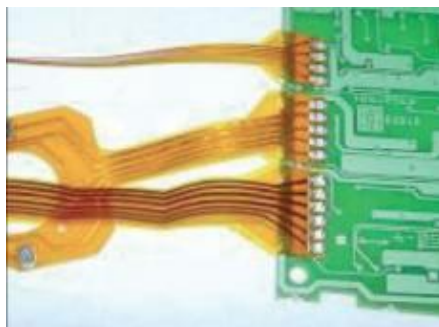
Drawings NH-2000A Series Pulsed Heat Reflow Soldering System (formerly known as MHBR)



Product applications NH-2000A Series Pulsed Heat Reflow Soldering System (formerly known as MHBR)



Flex soldering



Multiple flex bonding



Flex bonding



Wire soldering

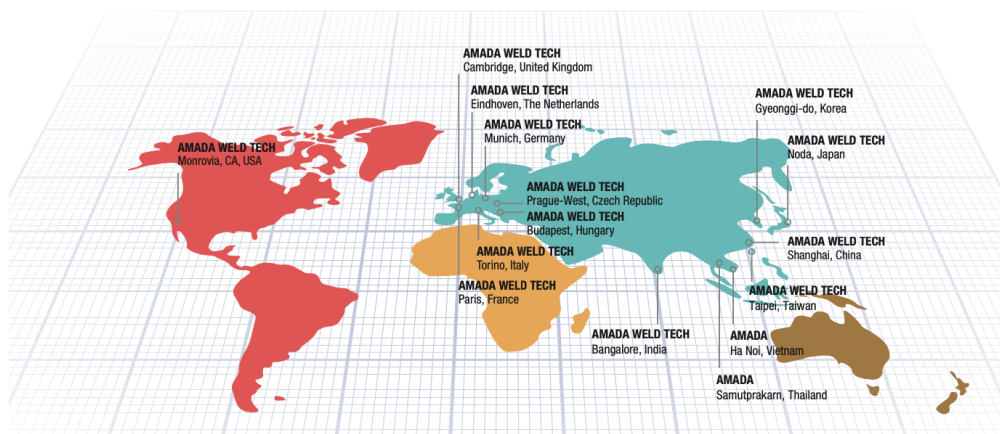
AMADA[®]

AMADA WELD TECH

OUR TECHNOLOGIES



OUR SALES OFFICES



AMADA WELD TECH GmbH
Lindberghstrasse 1 • DE-82178 Puchheim, Germany
T: +49 (0) 89 83 94 030 • Fax : +49 (0) 89 839403 68
info@amadaweldtech.eu • www.amadaweldtech.eu
ISO 9001 Certified Company

Please contact our worldwide
network here:



follow us on:



All data, images and text are subject to change at any time. AMADA WELD TECH GmbH reserves the right to change, modify, delete and add technical specifications and product details at any time without prior notification. © 2020 AMADA WELD TECH GmbH.

WWW.AMADAWELDTECH.EU