



## MG-300A Premium Hot Bar Monitoring System (formerly known as MG)

The new MG-300A Premium Hot Bar Monitoring system combines MIYACHI Hot Bar know-how with MIYACHI technical expertise in one unit. The MG-300A Hot Bar measures force, temperature, time and displacement and allow continuous control throughout the entire process cycle. The compact and flexible system features high quality Hot Bar connections and high throughput, all within an easily adjustable frame construction.

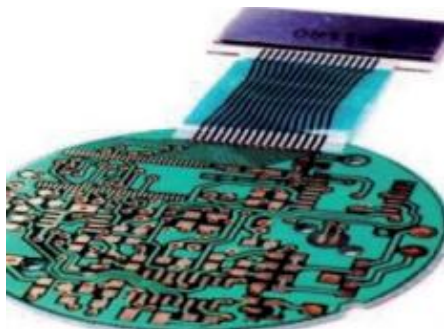
### Key Features MG-300A Premium Hot Bar Monitoring System

- > Premium Hot Bar Monitor designed to control Hot Bar Bonding processes reliably, efficiently and conveniently
- > Dual channel capability offers simultaneous monitoring
- > Configurable graphic user interface with 4 display quadrants, graphic and numeric indicators as well as intuitive online help gives maximum transparency for all relevant parameters
- > Full on-screen SPC capability generates real time monitoring
- > Up to 99 available schedules provides max. control with password protection
- > Modern interface infrastructure with RS232 or Ethernet TCP/IP
- > Bond interrupt functions enable the operator to steer the bond process
- > Convenient and safe data storage and data transfer with USB port

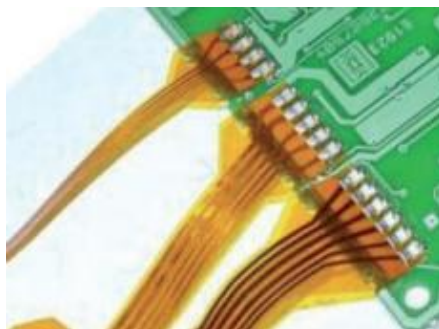
## Specifications MG-300A Premium Hot Bar Monitoring System (formerly known as MG)

.	Hot Bar-W2
Thermode cycle	K and J
Configuration	Thermode cycle K and J parallel with external BCD program selection, turn pressure knob for menu selection and parameter input, analog inputs force & pressure, optional: 2 displacement measuring sensors digital with 1 µm resolution
Measuring functions	Temperature and time pre-warning and limit values, envelope waveform function, counter, statistic process control (detected values unreadable as limit values),
Options	Displacement, advanced settings, parts detection, speed, pressure and force, 2 sensors
Supply voltage	90 – 260 V AC
Main frequency	50 - 60 Hz
Connected rating	60 W
Fusing	Internal 2 A delayed
Connecting cable	3 x 0,75 mm², 2 m long
Protection class	IP30
Graphic display	120 x 90 mm
Graphic scan	10 points/ms
Storage	USB Port
Temp and force	25 degrees Celsius up to 600 degrees Celsius, 8 to 2500 N
Monitoring programs	99
Measuring times	0 to 60 seconds
Scan-rate	100 ms per channel
Analogue input	Temperature, Force and Displacement
Digital input	15-p. D-SUB male connector, BCD; 5-p, D-SUB male connector
Digital output	15-p. D-SUB male connector, BCD; 25-p, D-SUB male connector
Digital interface	Digital I/O, RS232, Ethernet TCP/IP and USB port are standard CANOpen, Profibus or Ethernet/IP are optional features
Serial interface RS232	Output of measuring values in ASCII compatible printer format
Environment Temperature	0 – 40 °C
Force measuring range	8 to 2500 N (depending on bond head)
Displacement measuring range / accuracy	0 – 12,5 mm/ +/- 2 µm with sensor 1 µm
Displacement measured value resolution	According to sensor type 1 to 0.1 µm digital
Weight approx.	5,4 kg
Dimensions (L x H x D)	240 x 135 x 320 mm
Certification	CE

Product applications MG-300A Premium Hot Bar Monitoring System (formerly known as MG)



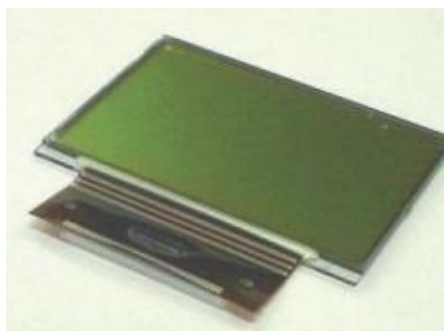
Heat-Seal Bonding



Hot Bar Reflow Soldering



Heat Staking

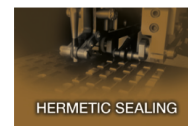


ACF Bonding

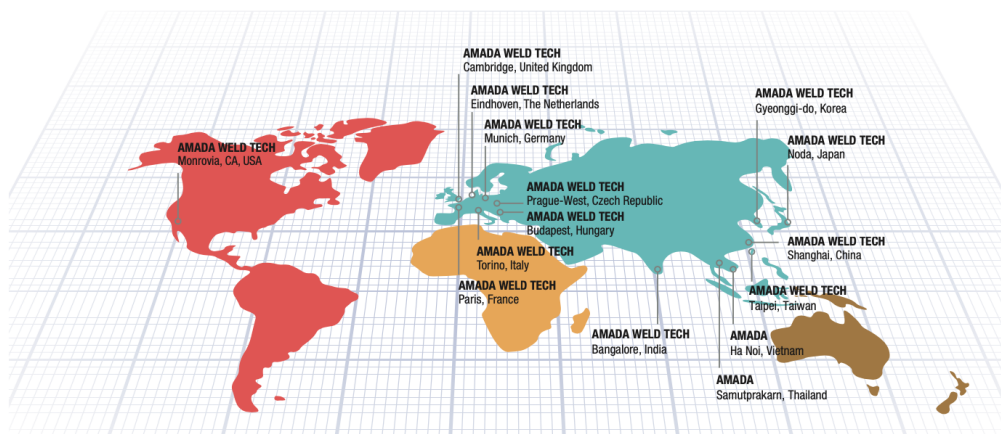
# AMADA®

## AMADA WELD TECH

### OUR TECHNOLOGIES



### OUR SALES OFFICES



**AMADA WELD TECH GmbH**  
Lindberghstrasse 1 • DE-82178 Puchheim, Germany  
T: +49 (0) 89 83 94 030 • Fax : +49 (0) 89 839403 68  
info@amada-weldtech.eu • www.amada-weldtech.eu  
ISO 9001 Certified Company

Please contact our worldwide  
network here:



follow us on:



All data, images and text are subject to change at any time. AMADA WELD TECH GmbH reserves the right to change, modify, delete and add technical specifications and product details at any time without prior notification. © 2020 AMADA WELD TECH GmbH.

**WWW.AMADAWELDTECH.EU**