



Sigma Fiber Laser Tube Cutter

AMADA WELD TECH's Sigma Laser Tube Cutting System is the ideal solution for precision laser cutting of medical hypodermic tubes and stents.

Key Features Sigma Fiber Laser Tube Cutter

- Maximize throughput with high speed direct drive stages - Integrated X and theta "lathe" axes are direct drive technology with high dynamic precision performance delivering the highest accelerations and operating speeds
- Multi axis options -The tube cutter provides 3 axes as standard; X, theta, and Z. A forth optional transverse axis, Y, is available for off axis cut geometries.
- Designed for precision -The lathe stages are mounted directly to a composite base with vertical and transverse stages mounted to a composite gantry secured to the composite base. The composite material construction provides superior rigidity with vibration dampening. Linear motors combined with high resolution linear encoders precisely position the X and Y axes.
- User interface with integrated camera - Large Windows® format user screens display comprehensive machine status with easy to use functionality. The camera image integrated to the user screen provides inline through-the-lens viewing.
- Wet and dry operation - Standard, integrated water system with flow rate control, level sensors and easily changed filters. The lathe stages, rated IP54, and all connections are sealed for reliable wet operation.
- Enclosure features and safety -The CDRH Class 1 workstation enclosure includes ISO 13849-01 Category 3 safety interlocks. The interlocked full front door lifts easily vertically to provide full access to tooling, focus head, and stages. A smaller window door slides horizontally maximizing operator productivity.

Specifications Sigma Fiber Laser Tube Cutter

Laser and Motion Parameter	Specification
Laser	Yb: fiber laser, 200 or 500 Watts
Beam diameter	Minimum 12 microns with 50 mm lens
Collet	Standard: 5C options: 1C or ER40
Linear X Axis	+/- 5 μ m +/- 2 μ m
Travel	
Rotary axis	1.1 arc sec
Linear Z Axis	50 mm
Linear Y Axis (Optional)	50 mm
Accuracy	+/- 5 μ m +/- 2 μ m
Input power	208-240 VAC 50-60 Hz, single phase, 30 Amps
Size (HxWxD) does not include light tower and user interface	1960 mm x 790 mm x 1525 mm (77 in x 31 in x 60 in)
Weight	1360 kg (3000 lb)

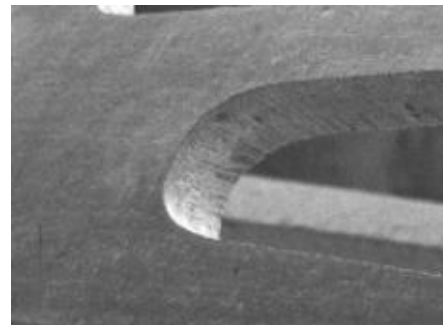
Product applications Sigma Fiber Laser Tube Cutter



Large diameter biopsy device



Flexible tubing



Metal stents



Micro cannula



Capsule

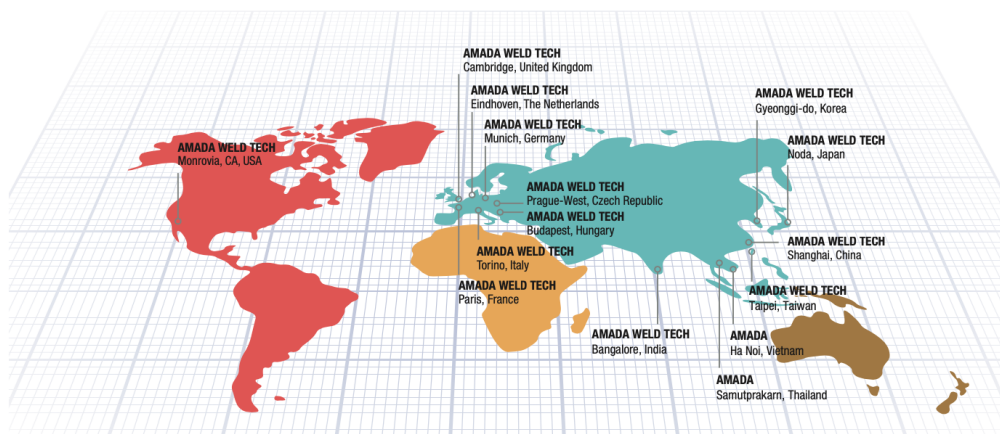
AMADA[®]

AMADA WELD TECH

OUR TECHNOLOGIES



OUR SALES OFFICES



AMADA WELD TECH GmbH
Lindberghstrasse 1 • DE-82178 Puchheim, Germany
T: +49 (0) 89 83 94 030 • Fax : +49 (0) 89 839403 68
info@amada-weldtech.eu • www.amada-weldtech.eu
ISO 9001 Certified Company

Please contact our worldwide
network here:



follow us on:



All data, images and text are subject to change at any time. AMADA WELD TECH GmbH reserves the right to change, modify, delete and add technical specifications and product details at any time without prior notification. © 2020 AMADA WELD TECH GmbH.

WWW.AMADAWELDTECH.EU