



WL-100A - Laser Marking Workstation (formerly known as LMWS)

AMADA WELD TECH's WL-100A Laser Marking Workstation is a highly configurable, compact unit that has been designed for lean manufacturing and offers the widest range of marking capability in its class. The marking system can be equipped with six different lasers, three different output lenses and three different diameter laser beams to always provide the optimal solution for a wide range of metals, plastics and ceramics that need to be marked.

Key features WL-100A - Laser Marking Workstation

- > Compact, workstation designed for benchtop operation, minimal workspace needed
- > Fast and precise motorized Z-axis for easy focus adjustment, optional programmable Z-axis
- > Wrap-around door for easy access to parts & tooling
- > Large viewing window for easy mark monitoring
- > F-Theta 100 mm, 160 mm and 254 mm lens options for marking various parts and sizes
- > Fume extraction port with flexible tubing
- > Optional compact, motorized rotary axis for marking cylindrical parts
- > M6 pattern mounting base plate for easy part fixturing
- > Integrated with AMADA WELD TECH's industrially proven ML Fiber Laser Markers (10-70W)

Specifications WL-100A - Laser Marking Workstation (formerly known as LMWS)

Electrical	Single phase, 90 -130 VAC/180 - 260 VAC, 50/60 Hz, 10 A
Standard lens options	F-Theta - 100 mm, 160 mm, 254 mm
Laser protection class	CE Class 1
Software	WinLase®
Available markers	All ML series fiber laser markers (10 - 70 W)
Axes	Standard motorized Z-jog
Options (Depends on lens selection)	Programmable Z and/or rotary axes (control through marker motion in WinLase® marking software)
Work piece specifications	WL-100A
Size (H x W X D) (Depends on lens selection)	250 mm x 200 mm x 200 mm (100 mm lens - 10 in x 8 in x 8 in) 200 mm x 200 mm x 200 mm (160 mm lens - 8 in x 8 in x 8 in) 98 mm x 200 mm x 200 mm (254 mm lens - 3.8 in x 8 in x 8 in)
Rotary part size	Up to 60 mm (2.5 in) diameter
Dimensions (LxWxH) - Enclosure closed	814.5 mm x 441.1 mm x 860.8 mm (31.2 in x 17.4 in x 33.9 in)
Dimensions (LxWxH) - Enclosure fully opened	814.5 mm x 441.1 mm x 1320.8 mm (31.2 in x 17.4 in x 52 in)
Weight	68 kg (150 lbs)

Product applications WL-100A - Laser Marking Workstation (formerly known as LMWS)



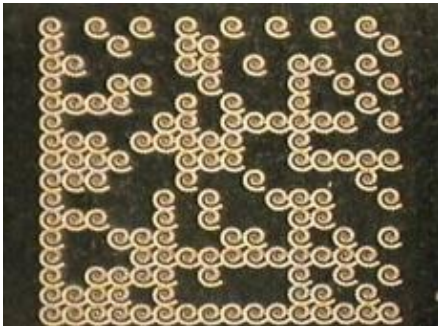
ML-7311D - 10 W Marking system - Marking on metals



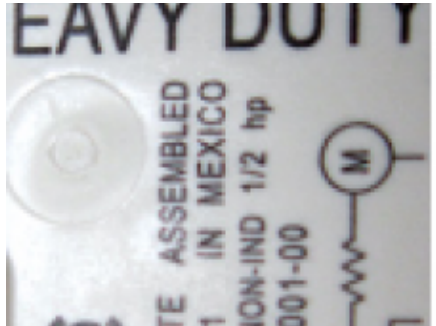
ML-7321D - 20 W Marking system - Marking on metals



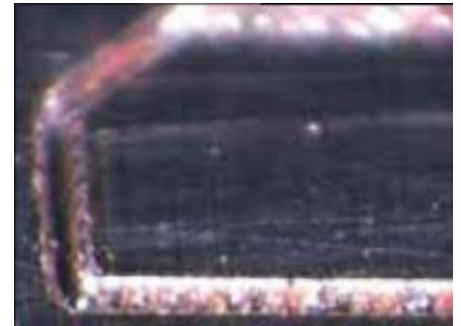
ML-7322D - SM - 20 W Precision Marking System - Precision marking for Smallest Feature size



ML-7320D - 20 W Advanced Marking System - Marking on Metals and Plastics



ML-7340D - Marking on Plastics and Large area annealing



ML-7350D/ML-7370D - Fast marking & Engraving of Stainless Steel

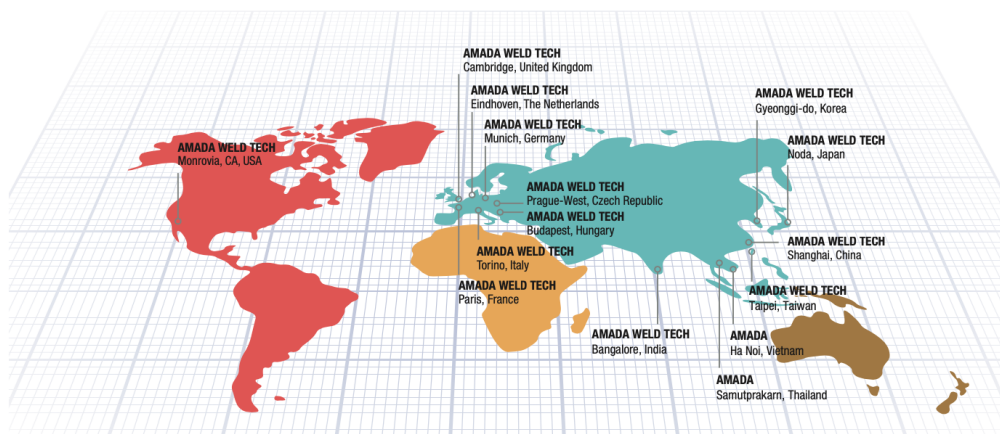
AMADA®

AMADA WELD TECH

OUR TECHNOLOGIES



OUR SALES OFFICES



AMADA WELD TECH GmbH
Lindberghstrasse 1 • DE-82178 Puchheim, Germany
T: +49 (0) 89 83 94 030 • Fax : +49 (0) 89 839403 68
info@amada-weldtech.eu • www.amada-weldtech.eu
ISO 9001 Certified Company

Please contact our worldwide
network here:



follow us on:



All data, images and text are subject to change at any time. AMADA WELD TECH GmbH reserves the right to change, modify, delete and add technical specifications and product details at any time without prior notification. © 2020 AMADA WELD TECH GmbH.

WWW.AMADAWELDTECH.EU