



## ML-6810B - 1000-1200W Fiber Laser Welder

The 1 kW fiber laser welder ML-6810B offers excellent beam quality and maximum power for new and precise welding applications such as steel sheet and copper. ML-6810B meets laser welding needs perfectly in the medical, automotive (sheet welding), solar, and electrical industries.

### Key features ML-6810B - 1000-1200W Fiber Laser Welder

- > Small focus with longer focal lengths
- > Higher efficiency than lamp pumped systems
- > Plug and play systems
- > Estimated diode life time > 100.000 hours
- > Integrated internal chiller
- > Integrated beam splitter ( up to three outputs)
- > Energy share or time share available for certain models upon request
- > Outstanding beam parameter product
- > CW / Pulse selectable
- > Pulse : 1 to 5000 pps
- > Fiber diameter: SI 0.05 - 1 mm
- > Environment 5 to 50°C with humidity 50 to 85 %
- > IP 54

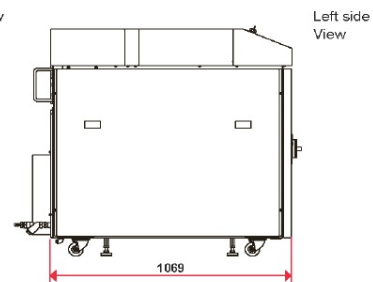
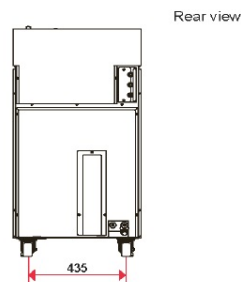
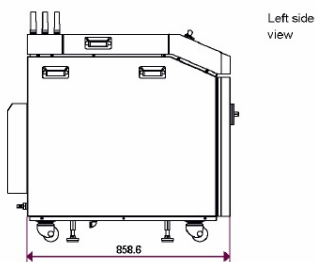
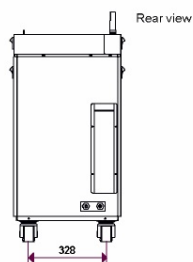
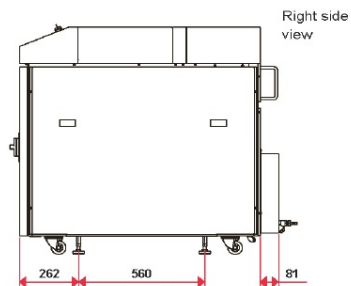
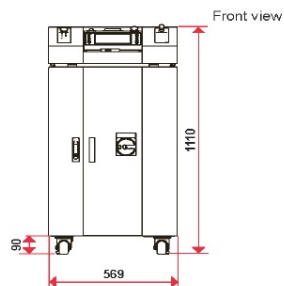
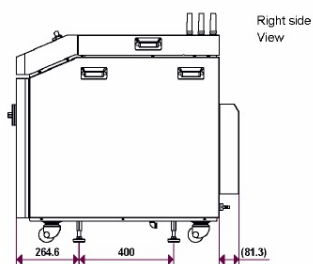
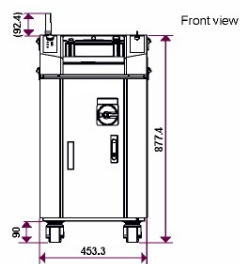
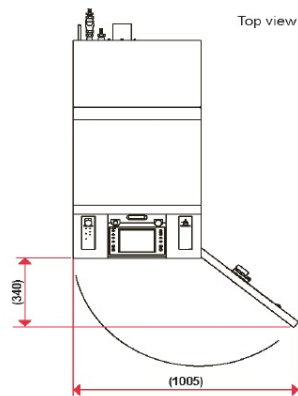
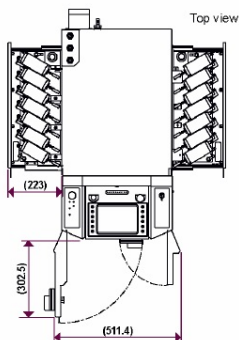
## Specifications ML-6810B - 1000-1200W Fiber Laser Welder

<b>Model</b>	ML-6810B
<b>Max. rated output</b>	1000 W or 1200 W
<b>Power requirements</b>	3-phase, 200 V to 400 V AC (+10% / -15%), 50/60 Hz
<b>Breaker rated current</b>	50A (380 V / 400 V)
<b>Cooling</b>	Water - Water
<b>Weight</b>	280 kg
<b>Safety class</b>	Class 4 laser, pilot laser: Class 1
<b>Certification</b>	CE compliant

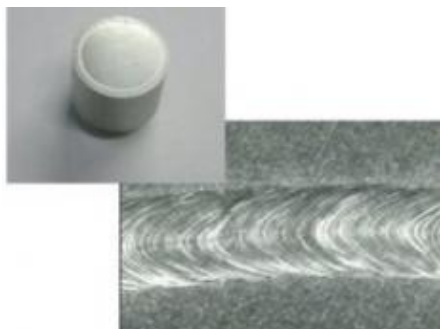
# Drawings ML-6810B - 1000-1200W Fiber Laser Welder

⇒ For ML-6500C, four FC-LDs are contained on each side.

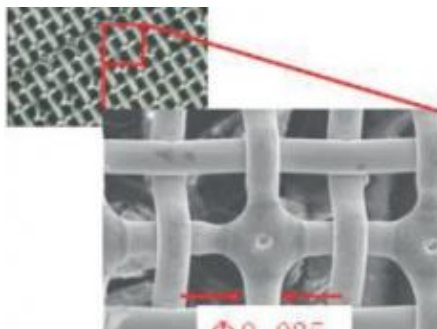
Unit: mm



Product applications ML-6810B - 1000-1200W Fiber Laser Welder



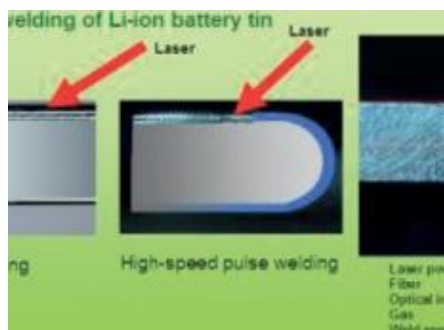
Fine cutting of metals



Brazing



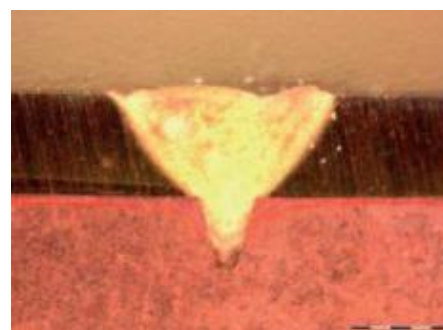
Plastic welding



Cladding



Bellow welding



CuSn6

# AMADA<sup>®</sup>

## AMADA WELD TECH

### OUR TECHNOLOGIES



RESISTANCE WELDING



LASER WELDING



LASER MARKING



HERMETIC SEALING



HOT BAR REFLOW  
SOLDERING & BONDING



SYSTEMS SOLUTIONS

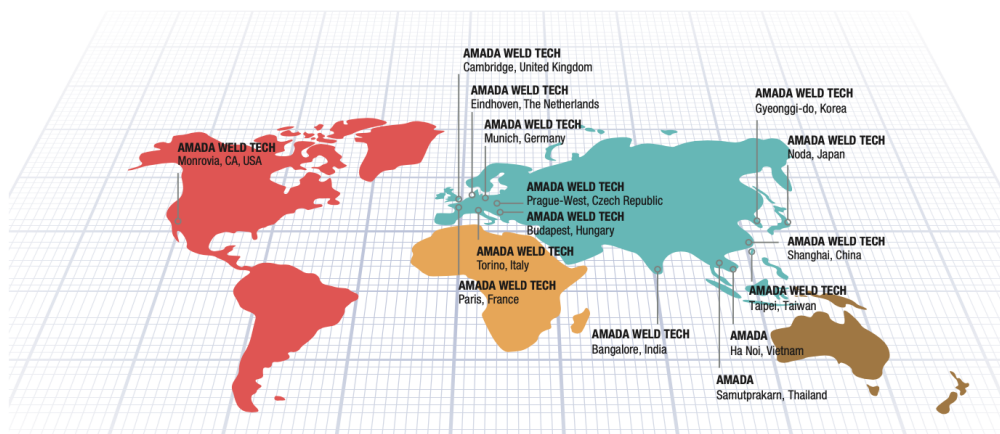


LASER CUTTING



MICRO TIG WELDING

### OUR SALES OFFICES



**AMADA WELD TECH GmbH**  
Lindberghstrasse 1 • DE-82178 Puchheim, Germany  
T: +49 (0) 89 83 94 030 • Fax : +49 (0) 89 839403 68  
info@amada-weldtech.eu • www.amada-weldtech.eu  
ISO 9001 Certified Company

Please contact our worldwide  
network here:



follow us on:



All data, images and text are subject to change at any time. AMADA WELD TECH GmbH reserves the right to change, modify, delete and add technical specifications and product details at any time without prior notification. © 2020 AMADA WELD TECH GmbH.

**WWW.AMADAWELDTech.EU**