



## CD-A - Advanced Capacitive Discharge Welder

The CD-A Advanced Capacitive Discharge Welder features dual pulse output control, internal pulse monitoring, optional polarity switching and is automation capable.

The unit offers consistent welding output for repeatable process results, with ultrafast rise time for conductive material welding. Featuring fully controllable dual pulse output, the CD-A provides pulse shaping with 4 discrete pulse lengths, programmable squeeze and hold times and adjustable pulse separation. Furthermore, the units offer the ability to set limits around a schedule to prevent bad welds and a built-in peak current indicator which indicates the last weld peak current. The ability to change polarity – individual settings for positive, negative, or alternating polarity – allows for a way to balance weld nuggets and overcome the Peltier effect, as well as extend electrode life.

The CD-A welder is automation ready and can be easily integrated into production lines. The unit can be programmed to communicate with a host computer or with an automation control system. Operators can set and store up to 63 schedules to quickly change between weld parameters. A schedule chaining feature lets users automatically switch between two different schedules. The power supplies enable rapid fire between pulses for quick welding of adjacent locations.

The CD-A Advanced Capacitive Discharge Welder is ideal for battery tab welding, interconnects, honeycomb tacking and fine wire to pad applications.

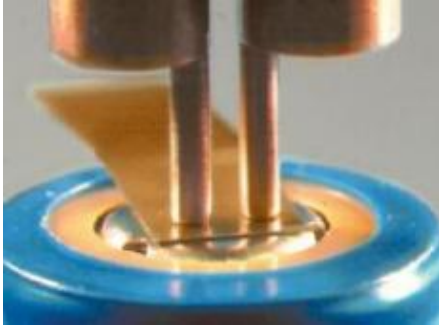
### Key Features CD-A - Advanced Capacitive Discharge Welder

- > Dual pulse function helps overcome surface inconsistencies
- > Built-in monitor measures peak current for both pulses for process monitoring
- > Process monitor features a color coded bar graph on the RUN screen that provides instant weld history of In Limit/ Out of Limit percentages to assess process performance
- > Upper and lower limits can be set for both pulses, with an option to inhibit Pulse 2 if Pulse 1 is out of limits. Prevents weld blow out
- > Upslope function allows gradual ramping of weld energy to alleviate weld splash
- > Automatic polarity switching between pulses provides even heating between electrodes and increases electrode life
- > Up to four software selectable pulse widths increases the range of welding applications and improves process optimization
- > Efficient power electronics provide high repetition rates

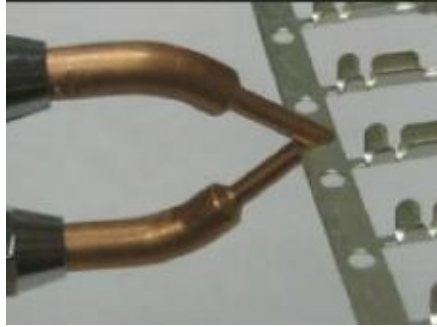
## Specifications CD-A - Advanced Capacitive Discharge Welder

| Feature                                   | CD-A125A / CD-A300A / CD-A1000A                           |
|---|---|
| Input line voltage                        | 90 - 138 VAC, 50 - 60 Hz ; 180 - 264 VAC, 50 - 60 Hz      |
| Dual pulse                                | Yes   |
| Air head driver output                    | 24 V, DC or AC – 0.5 A Max.                               |
| Weld schedules                            | 63  |
| Chain schedules (Automatic Step)          | Yes   |
| Programmable Squeeze Time                 | Programmable per schedule from 0 - 2.999 sec              |
| Programmable hold time                    | Programmable per schedule from 0 - 2.999 sec              |
| Remote Schedule Selection                 | Yes   |
| Programmable Polarity                     | Positive/Negative/Alternating                             |
| End Cycle Buzzer                          | Yes   |
| Output Relays                             | Weld Ready, Weld End, Counter Limit, Alarm, Out of Limits |
| Microprocessor Control                    | Yes   |
| Weld Counter with User Programmable Limit | Yes   |
| Languages                                 | English, Spanish, German                                  |
| <b>WEIGHT &amp; DIMENSIONS</b>            |   |
| Dimensions (LxWxH) CD-A125A               | 388 mm x 261 mm x 375 mm (15.25 in x 10.26 in x 14.76 in) |
| Weight CD-A125A                           | 20 kg (44 lbs)  |
| Dimensions (LxWxH) CD-A300A               | 388 mm x 261 mm x 375 mm (15.25 in x 10.26 in x 14.76 in) |
| Weight CD-A300A                           | 31 kg (69 lbs)  |
| Dimensions (LxWxH) CD-A1000A              | 388 mm x 261 mm x 375 mm (15.25 in x 10.26 in x 14.76 in) |
| Weight CD-A1000A                          | 31 kg (69 lbs)  |

Product applications CD-A - Advanced Capacitive Discharge Welder



Battery tab welding



Tack welding of carrier strip



Conductive terminal attachment

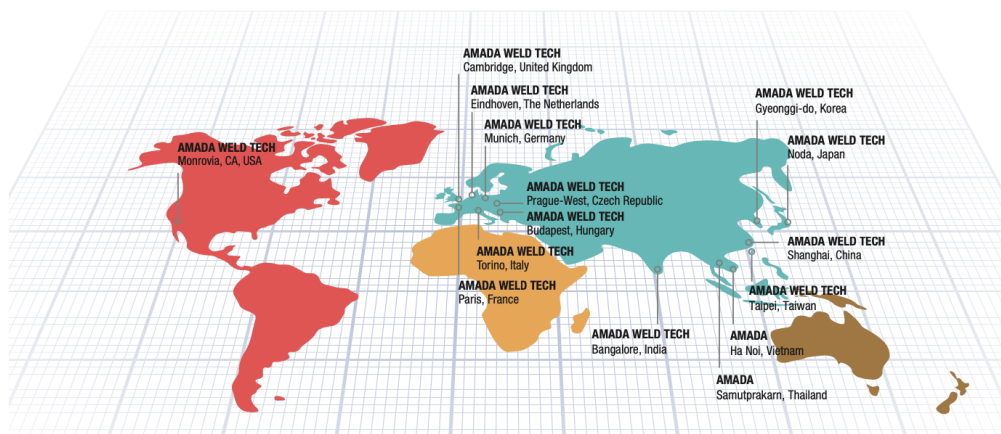
# AMADA<sup>®</sup>

## AMADA WELD TECH

### OUR TECHNOLOGIES



### OUR SALES OFFICES



**AMADA WELD TECH GmbH**  
Lindberghstrasse 1 • DE-82178 Puchheim, Germany  
T: +49 (0) 89 83 94 030 • Fax : +49 (0) 89 839403 68  
info@amada-weldtech.eu • www.amada-weldtech.eu  
ISO 9001 Certified Company

Please contact our worldwide  
network here:



follow us on:



All data, images and text are subject to change at any time. AMADA WELD TECH GmbH reserves the right to change, modify, delete and add technical specifications and product details at any time without prior notification. © 2020 AMADA WELD TECH GmbH.

**WWW.AMADAWELDTECH.EU**