



70 Series - Servo Motor Driven Weld Head

Designed for use in automation or benchtop welding, AMADA WELD TECH's 70 Series Weld heads offer stable, repeatable electrode force for a wide range of resistance welding applications. Two different models are available, each equipped with an easy-to-program, state-of-the-art servo motor controller which allows the electrode positions to be precisely programmed and a speed of up to 32 different weld schedules.

Key features 70 Series - Servo Motor Driven Weld Head

- Write and save up to 32 motion schedules
- "Soft-touch" part clamping minimizes impact force and allows verification of part alignment prior to welding
- Fast follow-up means less weld splash and more consistent welds
- Individual speed control for "stroke to search" and "search to weld" increases flexibility and throughput; good for automation
- Overforce protection ensures concise repeatable force, less weld splash, and reduced part deformation
- Constant applied force - independent of part height - ensures weld repeatability
- Easy programming and fast, efficient schedule adjustment

Servo Motor Driven Weld Heads

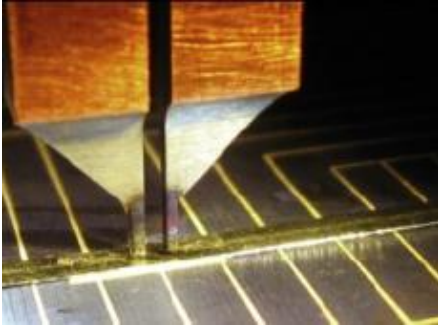
Programmable electrode positions – accurate to .004 in

- "Home" position allows for easy access during maintenance
- Electrode in the "Upstop" position in the "Ready" state
- The first level of the footswitch moves the electrode down to the "Search" position at a programmable "Soft-touch" speed
- The second level of the footswitch applies the pre-set welding force, with no overforce
- Programmable "Downstop" inhibits welding if parts are not present

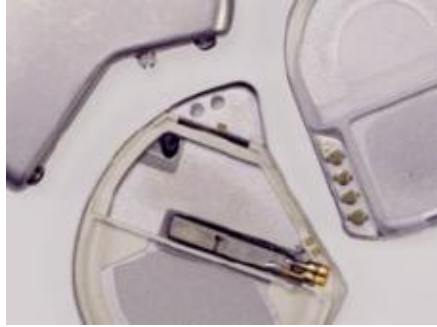
Specifications 70 Series - Servo Motor Driven Weld Head

Model number	Model 71	Model 72	
Head type	Opposed	Parallel	
Force range	0.25 – 8 lbs.*	0.25 – 8 lbs.* per electrode	
Weld force method	Spring force setting	Spring force setting	
Actuation method	Servo motor	Servo motor	
Electrode stroke	1.5 in max. (.004 in steps)	1.5 in max. (.004 in steps)	
Throat depth inches	4	8	
Number of schedules	32 (selectable externally)	32 (selectable externally)	
Electrode speed	Start point – Mid point – 8 speeds adjustable by schedule (20-300 mm/s) Mid point – Welding point – 4 speeds adjustable by schedule (7.5-30 mm/s) 8 settings (100, 200, 300, 400, 500, 1000, and 2000 ms, external END signal)	Start point – Mid point – 8 speeds adjustable by schedule (20-300 mm/s) Mid point – Welding point – 4 speeds adjustable by schedule (7.5-30 mm/s) 8 settings (100, 200, 300, 400, 500, 1000, and 2000 ms, external END signal)	
Power supply	100 - 220 VAC 50/60 Hz	100 - 220 VAC 50/60 Hz	
Welding current	3000 amps @ 2% DC	3000 amps @ 2% DC	
Model number	Model 71	Model 72	Controller
Dimensions (LxWxH)	216 mm x 80 mm x 300 mm (8.5 in x 3.14 in x 11.8 in)	404 mm x 120 mm x 270 mm (15.9 in x 4.7 in x 10.6 in)	243.8 mm x 63.5 mm x 154.9 mm (9.6 in x 2.5 in x 6.1 in)
Weight	7.7 lbs (3.5 kg)	16 lbs (7.3 kg)	6.6 lbs (3 kg)

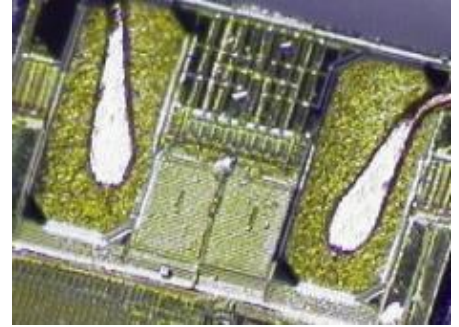
Product applications 70 Series - Servo Motor Driven Weld Head



Solar cell



Pacemaker interconnects

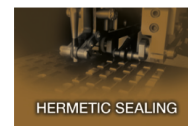


0.002 in diameter magnet wire to gold pad

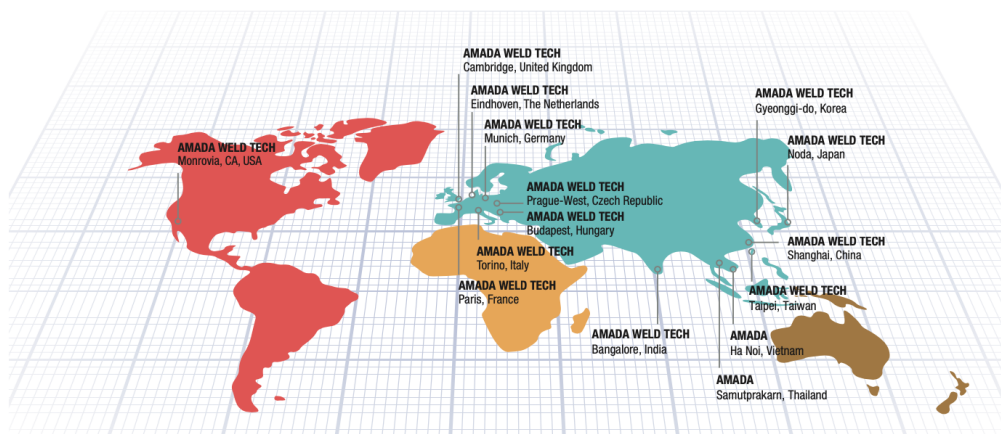
AMADA®

AMADA WELD TECH

OUR TECHNOLOGIES



OUR SALES OFFICES



AMADA WELD TECH GmbH
Lindberghstrasse 1 • DE-82178 Puchheim, Germany
T: +49 (0) 89 83 94 030 • Fax : +49 (0) 89 839403 68
info@amada-weldtech.eu • www.amada-weldtech.eu
ISO 9001 Certified Company

Please contact our worldwide
network here:



follow us on:



All data, images and text are subject to change at any time. AMADA WELD TECH GmbH reserves the right to change, modify, delete and add technical specifications and product details at any time without prior notification. © 2020 AMADA WELD TECH GmbH.

WWW.AMADAWELDTech.EU