

WFG SERIES

Digital Weld Head Force Gauge



The WFG series of digital force gauge are state of the art technology in electrode force measurement.

Designed specifically for opposed and parallel gap weld head force measurement, these units combine robust ergonomic design with electronic precision, offering single handed operation in a durable and easy to use unit

The units provide a friendly intuitive user interface with a large easy to read LCD display.

Force measurements can be displayed as grams, newtons or pounds and can be captured at any point with the display Hold button.

In addition all units provide an RS232 interface allowing measured data to be captured and analysed on a personal computer.

KEY FEATURES

- External trigger input to capture electrode force at the moment a weld is triggered
- Audible indication of errors, including overload, high and low force conditions
- Automatic and manual tare functions
- Automatic power off PP3 battery operation
- User selectable measurement units.
- Data HOLD feature
- RS-232 data port for data capture and calibration
- Operator mode, using set point and upper & lower percentage limits for force validation
- Peak hold feature

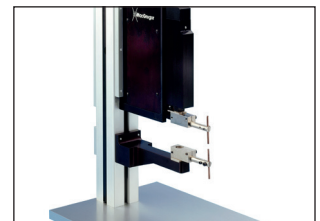
KEY BENEFITS

The Digital Force Gauge allows electrode force to be accurately and conveniently checked and logged, reducing common process problems and increasing production yield. Convenient and pocket sized, the WFG range is a highly versatile, robust measuring unit for both opposed and parallel gap weld heads.

TYPICAL APPLICATIONS



Force gauge

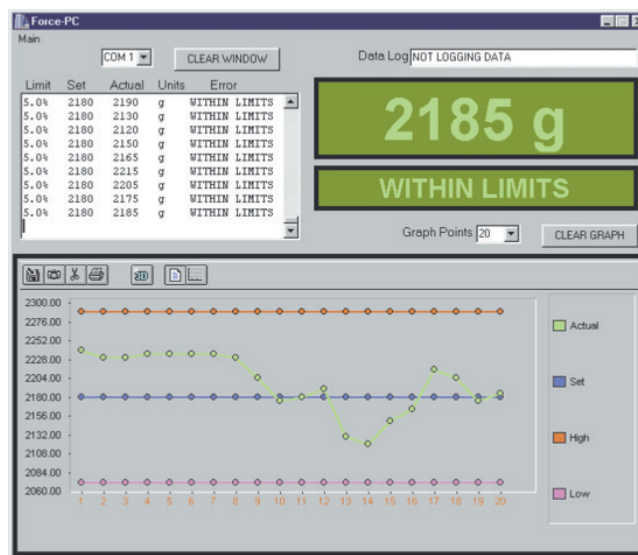


Opposed head

PRODUCT OVERVIEW

The ability to trigger with the weld head, along with data capture and hold facilities, the unit eliminates many of the common error variables associated with less sophisticated force measurement tools.

Based around a precision thin film strain gauge, the digital WFG maybe calibrated and verified using the RS232 port and a calibration dongle. Simple PC interfacing makes for quick and easy data capture and analysis.



Simple PC interfacing

TECHNICAL SPECIFICATIONS

Model	Model WFG2	Model WFG7	Model WFG15
Force Range grams	10 – 1800 gr	50 – 7000 gr	100 – 15000 gr
Force Range pounds	0.25 – 4.5 Lbs	0.1 – 15.7 Lbs	0.25 – 33.7 Lbs
Force Range Newtons	1 – 20 N	0.5 – 70 N	1 – 150 N
Maximum Electrode Diameter	6mm (0.250 in.)		
Resolution	better than 0.2%		
Accuracy	1% of FS at 25°C		
Trigger Input	Contact closure less than 10 ohms or voltage input 5 to 24V		
Communications Input/Output	RS232 standard IO for logging TTL levels for calibration		
Operating/Storage Temperature	5 to 40°C		
Operating Voltage	9V DC - PP3 battery		
Battery Life	Auto Power off - Battery life > 1 year		

WEIGHT & DIMENSIONS

W x D x H	W = 140mm (5.6 in.) D= 45mm (1.8 in.) H= 33mm (1.32 in.)
Weight	400 gr



Lindberghstrasse 1 • DE-82178 Puchheim, Germany
 T: +49 (0) 89 83 94 030 • Fax : +49 (0) 89 839403 68
 info@amadamiyachi.eu • www.amadamiyachi.eu
 ISO 9001 Certified Company

MIYACHI MIYACHI MIYACHI MIYACHI MacGregor
 UNITEK P E G G EAPRO

EUROPE

Amada Miyachi Europe BV
 Helmond, The Netherlands
 T: +31 (0) 492 542 225
 info@amadamiyachi.eu

Amada Miyachi Europe Kft.
 Budapest, Hungary
 T: +36 1 431 9927
 info@amadamiyachi.eu

Amada Miyachi Europe
 Mildenhall, United Kingdom
 T: +44 (0) 1638 510 011
 info@amadamiyachi.eu

Amada Miyachi Europe
 Tremblay-en-France, France
 T: +33 (0) 149 903 000
 info@amadamiyachi.eu

Amada Miyachi Europe
 Torino, Italy
 T: +39 011 223 83 16
 info@amadamiyachi.eu

Amada Miyachi Europe
 Prague-West, Czech Republic
 T: +420 251 512 157
 info@amadamiyachi.eu

AMERICAS

Amada Miyachi America Inc.
 Monrovia, CA, USA
 T: +1-626-303-5676
 info@amadamiyachi.com

Amada Miyachi do Brasil Ltda.
 Sao Paulo, Brasil
 T: +55-11-4193-1187
 antonio.ruiz@miyachi.com

ASIA

Amada Miyachi Co., Ltd.
 Noda, Japan
 T: +81-4-7125-6177
 sales@miyachi.com

Amada Miyachi Shanghai, Co., Ltd.
 Shanghai, China
 T: +86-21-6448-6000
 zqzhang@msc.miyachi.com

Amada Miyachi Korea Co., Ltd.
 Gyeonggi-do, Korea
 T: +82-31-8015-6810
 dykim@mkc.miyachi.com

Amada Miyachi Taiwan Co., Ltd.
 Taipei, Taiwan R.O.C.
 T: 886-2-2397-4778
 keigaku@miyachi.com

Amada Miyachi (Thailand) Co., Ltd.
 Samutprakarn, Thailand
 T: +66 (0) 2-170-5977
 info@mtl.miyachi.com

Amada Vietnam Co., Ltd.
 Ha Noi, Vietnam
 T: +84-4-6261-4583

Amada Miyachi India Pvt., Ltd.
 Bangalore, Kalyan Nager
 T: +91-80-4092-1749
 info@miyachiindia.com

All data, images and text are subject to change at any time. Amada Miyachi Europe GmbH reserves the right to change, modify, delete and add technical specifications and product details at any time without prior notification. © 2017 Amada Miyachi Europe GmbH.

follow us on:

