

LMWS

Laser Marking Work Station

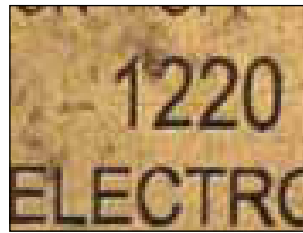


AMADA MIYACHI's LMWS (Laser Marking Work Station) is a highly configurable, compact unit designed for lean manufacturing. It offers the widest range of marking capability in its class.

Options include a rotary stage. The options can be used to tailor the machine to your specific process.

Integrated with AMADA MIYACHI's popular ML fiber markers, this unit has the same GUI and interface for easy transfer from prototype to production phase.

TYPICAL APPLICATIONS



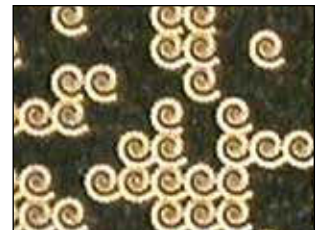
ML-7311D
10 W Marking System
Marking on Metals



ML-7321D
20 W Marking System
Marking on Metals



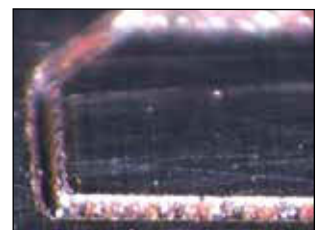
ML-7322D
SM - 20 W Precision
Marking System
Precision marking for
Smallest Feature size



ML-7320D
20 W Advanced Marking System
Marking on Metals and Plastics



ML-7340D
Marking on Plastics and
Large area annealing



ML-7350D/ML-7370D
Fast marking &
Engraving of Stainless Steel

KEY FEATURES

- Compact, workstation designed for benchtop operation, minimal workspace needed
- Fast and precise motorized Z-axis for easy focus adjustment, optional programmable Z-axis
- Wrap-around door for easy access to parts & tooling
- Large viewing window for easy mark monitoring
- F-Theta 100 mm, 160 mm and 254 mm lens options for marking various parts and sizes
- Fume extraction port with flexible tubing
- Optional compact, motorized rotary axis for marking cylindrical parts
- M6 pattern mounting base plate for easy part fixturing
- Integrated with AMADA MIYACHI's industrially proven ML Fiber Laser Markers (10-70 W)

SOFTWARE FEATURES

- Powerful, user-friendly Windows®* based job editor
- WYSIWYG “What-You-See-Is-What-You-Get” editing
- Easy to import graphics
- Multi language support
- Advanced DXF filter with process optimization
- Password protected security lockout
- Windows Softwareplatform

*Windows® is a registered trademark of Microsoft Corp.

MARK TYPES

- Line-art graphics: CAD, line-drawings, logos
- Shaded graphics: photos, halftones & grayscale artwork
- TrueType®** fonts, filled or outline-only
- Single point or drill object arrays
- Data Matrix, QR and barcodes (1D and 2D)
- MS AutoDate, Data Matrix, TextMergs and serialization
- Accepted file types: .dxf, .dwg, .plt, .emf, .wmf, .bmp, .jpg, .gif, .cdr and .ai

**TrueType® is a registered trademark of Apple, Inc.



View of workspace including Z and rotary axis, fume extraction, and optical breadboard

TECHNICAL SPECIFICATIONS

Electrical	Single phase, 90 -130 VAC/180 - 260 VAC, 50/60 Hz, 10 A
Standard lens options	F-Theta - 100 mm, 160 mm, 254 mm
Laser protection class	CE Class 1
Software	WinLase®**
Available markers	All ML series fiber laser markers (10 - 70 W)

Axes	Standard motorized Z-jog
Options*	Programmable Z and/or rotary axes (control through marker motion in WinLase® marking software)

Work piece Specifications	LMWS
Size* (H x W x D)	250 mm x 200 mm x 200 mm (100 mm lens - 10 in x 8 in x 8 in) 200 mm x 200 mm x 200 mm (160 mm lens - 8 in x 8 in x 8 in) 98 mm x 200 mm x 200 mm (254 mm lens - 3.8 in x 8 in x 8 in)
Rotary part size	Up to 60 mm (2.5 in) diameter

*Depends on lens selection

According to DIN EN 60825-1:2014



WEIGHT & DIMENSIONS

Dimensions (L x W x H) - Enclosure closed	814.5 mm x 441.1 mm x 860.8 mm (31.2 in x 17.4 in x 33.9 in)
Dimensions (L x W x H) - Enclosure fully opened	814.5 mm x 441.1 mm x 1320.8 mm (31.2 in x 17.4 in x 52 in)
Weight	68 kg (150 lbs)



Lindberghstrasse 1 • DE-82178 Puchheim, Germany
T: +49 (0) 898 394 030 • Fax : +49 (0) 898 394 0368
info@amadamiyachi.eu • www.amadamiyachieurope.com
ISO 9001 Certified Company



EUROPE
Amada Miyachi Europe BV
Helmond, The Netherlands
T: +31 (0) 492 542 225
info@amadamiyachi.eu

Amada Miyachi Europe
Tremblay-en-France, France
T: +33 (0) 149 903 000
info@amadamiyachi.eu

Amada Miyachi Europe Kft.
Budapest, Hungary
T: +36 1 431 9927
info@amadamiyachi.eu

Amada Miyachi Europe
Torino, Italy
T: +39 011 223 83 16
info@amadamiyachi.eu

Amada Miyachi Europe
Mildenhall, United Kingdom
T: +44 (0) 1638 510 011
info@amadamiyachi.eu

Amada Miyachi Europe
Prague-West, Czech Republic
T: +420 251 512 157
info@amadamiyachi.eu

AMERICAS
Amada Miyachi America Inc.
Monrovia, CA, USA
T: +1-626-303-5676
info@amadamiyachi.com

Amada Miyachi do Brasil Ltda.
Sao Paulo, Brasil
T: +55-11-4193-1187
antonio.ruiz@miyachi.com

ASIA
Amada Miyachi Co., Ltd.
Noda, Japan
T: +81-4-7125-6177
sales@miyachi.com

Amada Miyachi Shanghai Co., Ltd.
Shanghai, China
T: +86-21-6448-6000
zqzhang@msc.miyachi.com

Amada Miyachi Korea Co., Ltd.
Gyeonggi-do, Korea
T: +82-31-8015-6810
dykim@mkc.miyachi.com

Amada Miyachi Taiwan Co., Ltd.
Taipei, Taiwan R.O.C.
T: 886-2-2397-4778
keigaku@miyachi.com

Amada Thailand Co., Ltd.
Samutprakarn, Thailand
T: +66 (0) 2-170-5977
info@mtl.miyachi.com

Amada Vietnam Co., Ltd.
Ha Noi, Vietnam
T: +84 4 6261 4583

Amada Miyachi India Pvt., Ltd.
Bangalore, Karnataka
T: +91 70 220 216 34
info@miyachindia.com

All data, images and text are subject to change at any time. Amada Miyachi Europe GmbH reserves the right to change, modify, delete and add technical specifications and product details at any time without prior notification. © 2018 Amada Miyachi Europe GmbH.

follow us on:

